

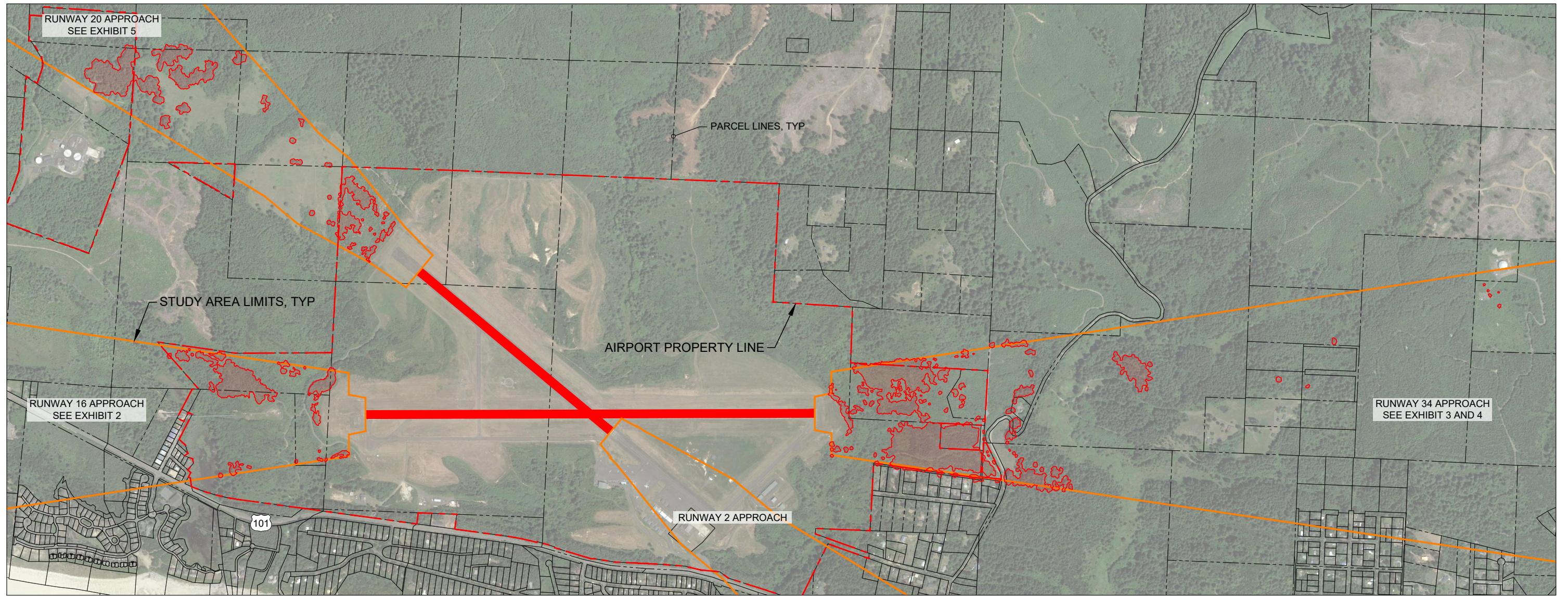
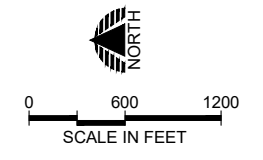
**PRELIMINARY  
NOT FOR CONSTRUCTION  
10/05/2021**

NEWPORT MUNICIPAL AIRPORT  
APPROACH OBSTRUCTION REMOVAL

**OVERALL SITE PLAN**

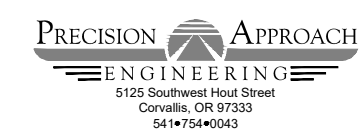
**PRECISION APPROACH  
ENGINEERING**  
5125 Southwest Hoyt Street  
Corvallis, OR 97333  
541-754-0043

10/05/21 - 11:16am - JWade - P:\N\mp011-obstruction removal\0400CAD\DWG\Sheets\EXH-Site.dwg



**PRELIMINARY  
NOT FOR CONSTRUCTION  
10/05/2021**

NEWPORT MUNICIPAL AIRPORT  
APPROACH OBSTRUCTION REMOVAL



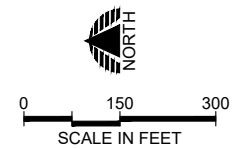
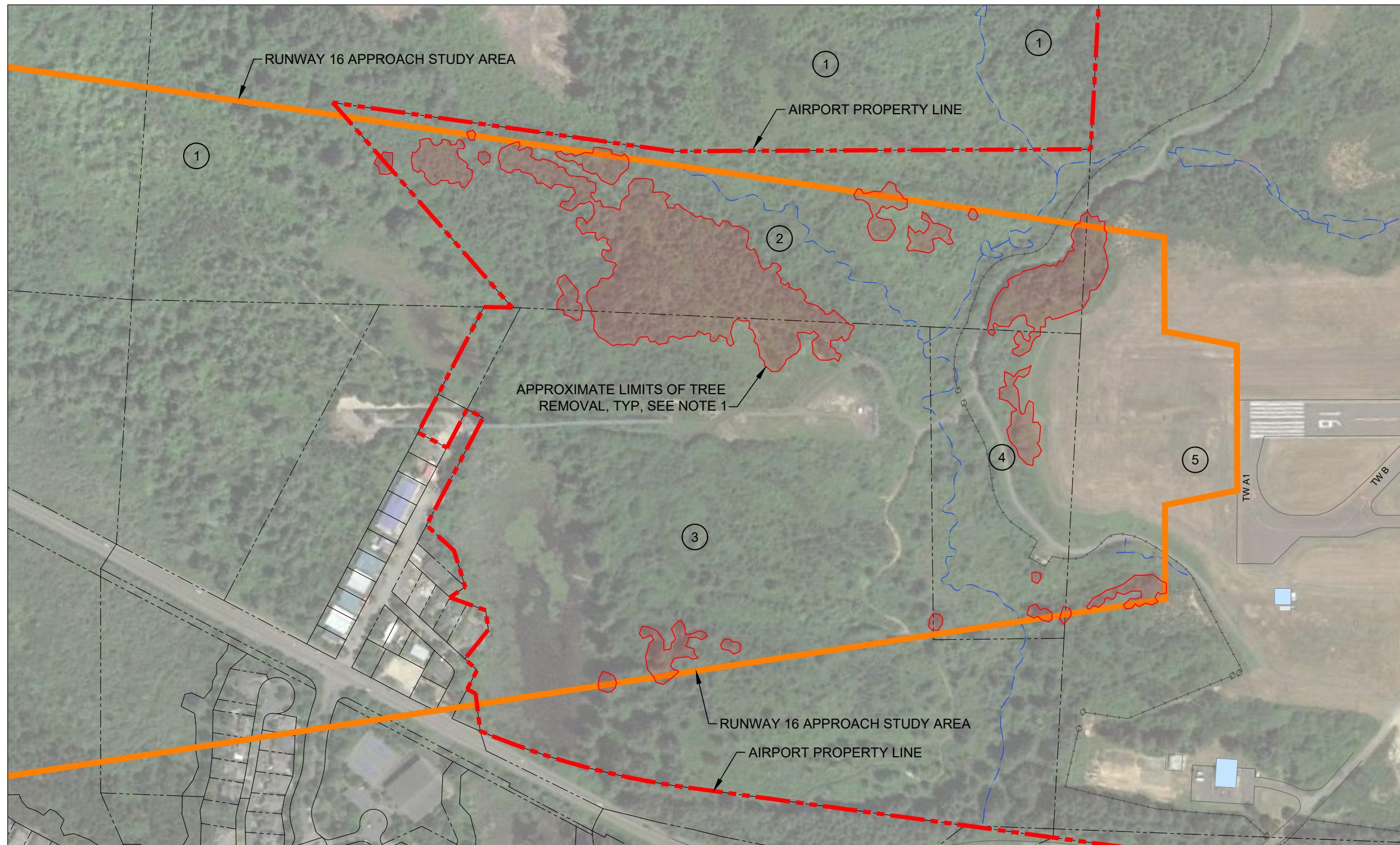
**SITE PLAN**

**Exhibit 2**

OCT 2021

10/05/21 - 11:16am - JWade - P:\n\p011-obstruction removal\0400CAD\DWG\Sheets\EXH-Site.dwg

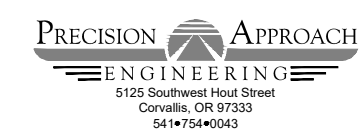
10/05/21 - 11:17am - JWade - P:\N\mp011-obstruction removal\0400CAD\DWG\Sheets\EXH-Site.dwg



TAG	PARCEL ID	OWNER
1	11-11-29-00-00300-00	LANDWAVES INC
2	11-11-29-00-00400-00	CITY OF NEWPORT
3	11-11-29-00-01402-00	CITY OF NEWPORT
4	11-11-29-00-01401-00	CITY OF NEWPORT
5	11-11-29-00-01100-00	CITY OF NEWPORT

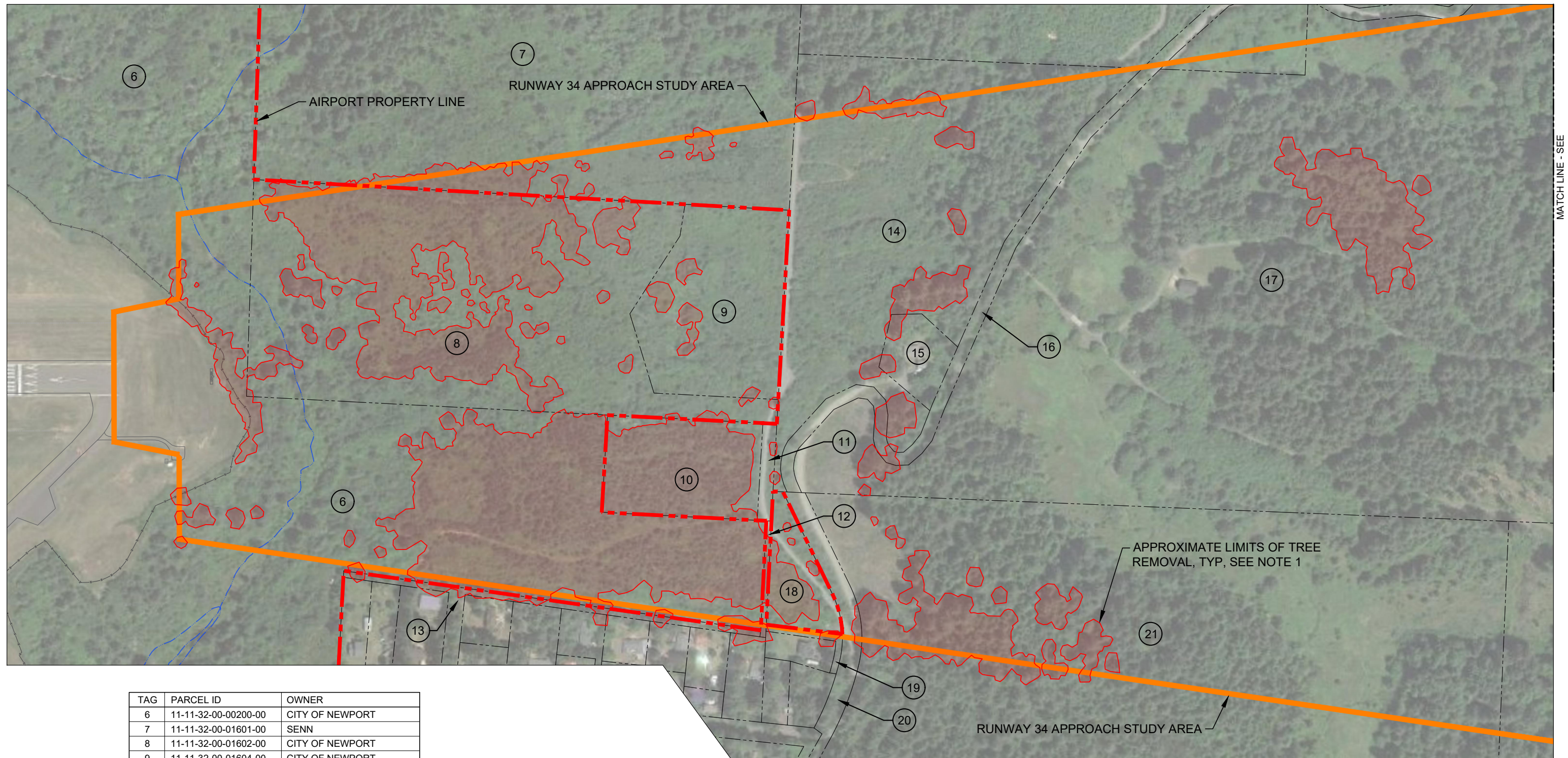
NOTES:  
 1. LIMITS OF TREE REMOVAL SHOWN OUTSIDE OF STUDY AREA REPRESENT CANOPIES OF TREES TO BE REMOVED.

**PRELIMINARY  
 NOT FOR CONSTRUCTION  
 10/05/2021**



NEWPORT MUNICIPAL AIRPORT  
 APPROACH OBSTRUCTION REMOVAL  
**RUNWAY 16 APPROACH**

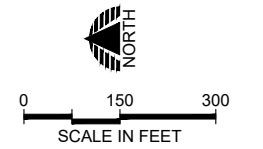
10/05/21 - 11:17am - JWade - P:\N\p011-obstruction removal\040CAD\DWG\Sheets\EXH-Site.dwg



TAG	PARCEL ID	OWNER
6	11-11-32-00-00200-00	CITY OF NEWPORT
7	11-11-32-00-01601-00	SENN
8	11-11-32-00-01602-00	CITY OF NEWPORT
9	11-11-32-00-01604-00	CITY OF NEWPORT
10	11-11-32-00-00201-00	STATE OF OREGON
11	11-11-32-00-01603-00	FERRIS
12	11-11-32-00-01600-00	LINCOLN COUNTY
13	11-11-32-CC-0ROAD-00	ROW
14	12-11-05-00-00800-00	STEEL STRING INC
15	12-11-05-00-00600-00	STEEL STRING INC
16	12-11-05-00-0ROAD-00	ROW
17	12-11-05-00-00803-00	STEEL STRING INC
18	12-11-06-00-00100-00	CITY OF NEWPORT
19	12-11-06-00-00200-00	WATTS
20	12-11-06-00-0ROAD-01	ROW
21	12-11-06-00-00600-00	STEEL STRING INC

NOTES:  
 1. LIMITS OF TREE REMOVAL SHOWN OUTSIDE OF STUDY AREA REPRESENT CANOPIES OF TREES TO BE REMOVED.

**PRELIMINARY  
 NOT FOR CONSTRUCTION  
 10/05/2021**



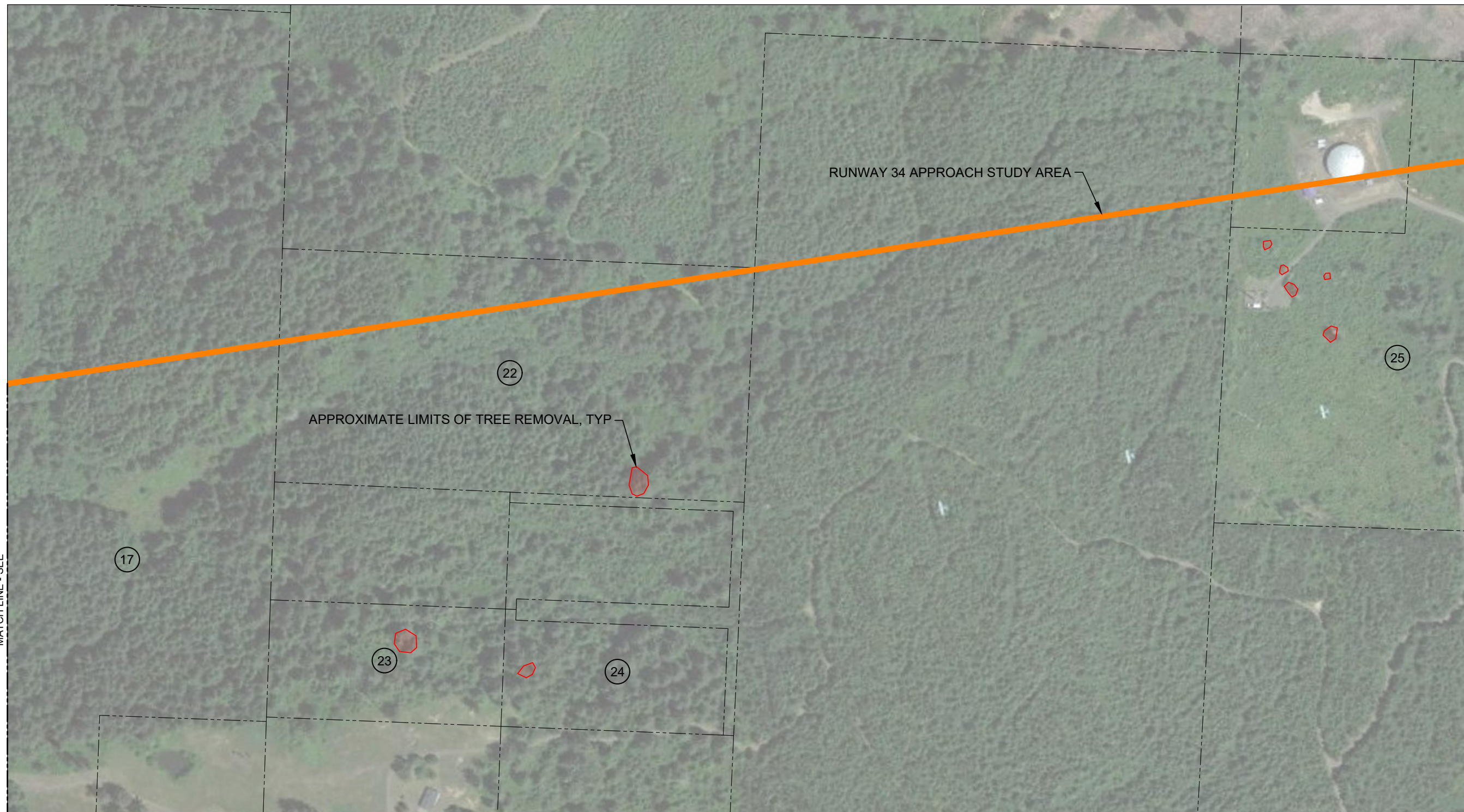
NEWPORT MUNICIPAL AIRPORT  
 APPROACH OBSTRUCTION REMOVAL

**RUNWAY 34 APPROACH**

**PRECISION APPROACH**  
 ENGINEERING  
 5125 Southwest Hout Street  
 Corvallis, OR 97333  
 541-754-0043

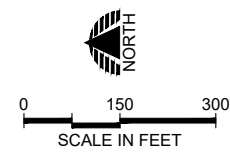
10/05/21 - 11:18am - JWade - P:\N\p1011-obstruction removal\0400CAD\DWG\Sheets\EXH-Site.dwg

MATCH LINE - SEE



TAG	PARCEL ID	OWNER
17	12-11-05-00-00803-00	STEEL STRING INC
22	12-11-05-00-00802-00	WEYERHAEUSER CO
23	12-11-05-CB-00200-00	STEEL STRING INC
24	12-11-05-CB-00700-00	STEEL STRING INC
25	12-11-00-00-03400-00	EMERY INVESTMENTS INC

**PRELIMINARY  
NOT FOR CONSTRUCTION  
10/05/2021**

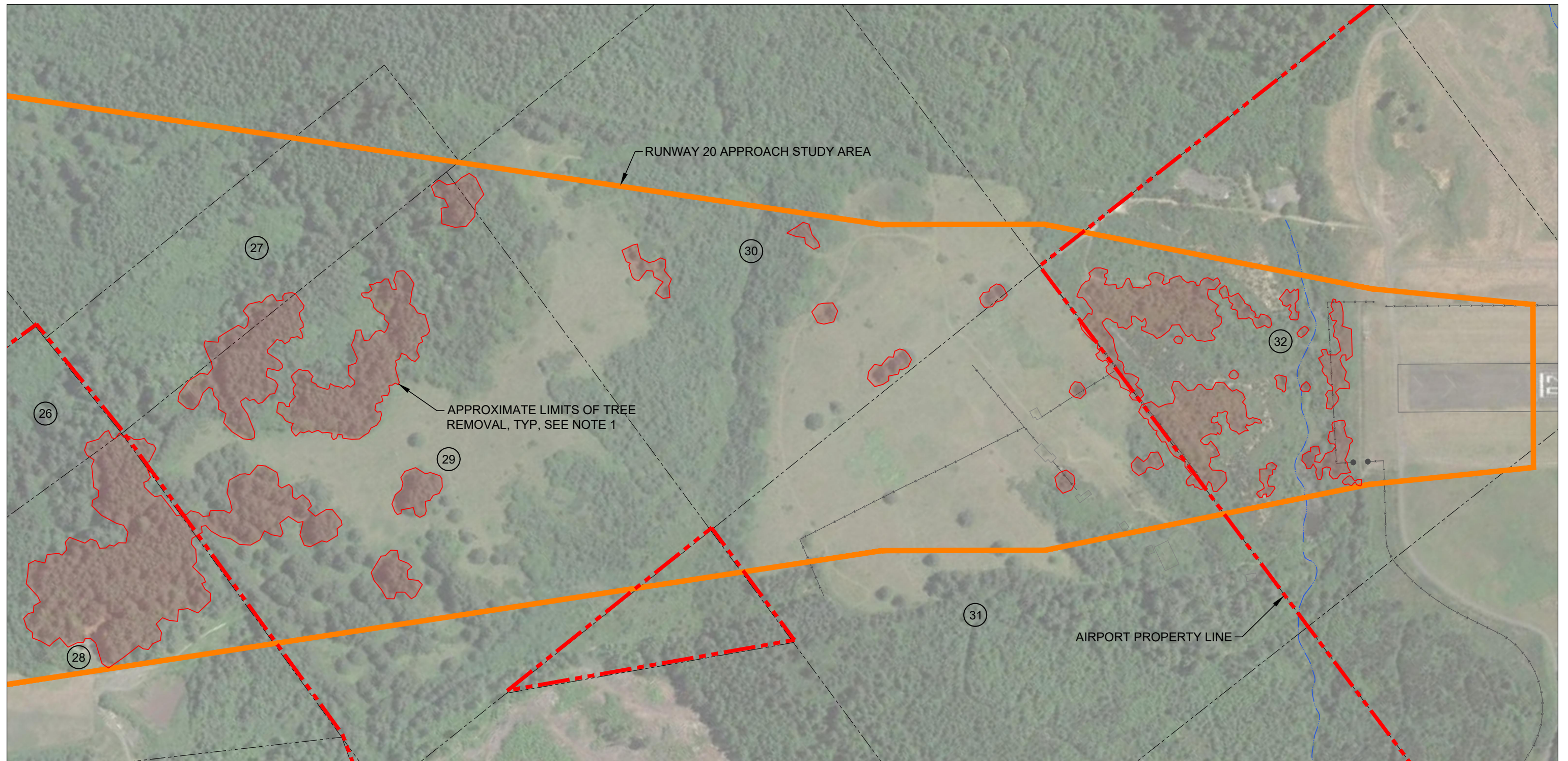


NEWPORT MUNICIPAL AIRPORT  
APPROACH OBSTRUCTION REMOVAL

**RUNWAY 34 APPROACH**



10/05/21 - 11:18am - JWade - P:\N\mp011-obstruction removal\0400CAD\DWG\Sheets\EXH-Site.dwg

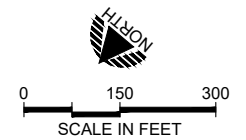


TAG	PARCEL ID	OWNER
26	11-11-21-00-01600-00	CITY OF NEWPORT
27	11-11-28-00-00700-00	HALL
28	11-11-20-00-02700-00	CITY OF NEWPORT
29	11-11-29-00-00100-00	HALL
30	11-11-29-00-00600-00	HALL
31	11-11-29-00-00500-00	HALL
32	11-11-29-00-01000-00	CITY OF NEWPORT

NOTES:

- LIMITS OF TREE REMOVAL SHOWN OUTSIDE OF STUDY AREA REPRESENT CANOPIES OF TREES TO BE REMOVED.

**PRELIMINARY  
NOT FOR CONSTRUCTION  
10/05/2021**



NEWPORT MUNICIPAL AIRPORT  
APPROACH OBSTRUCTION REMOVAL

**RUNWAY 20 APPROACH**

