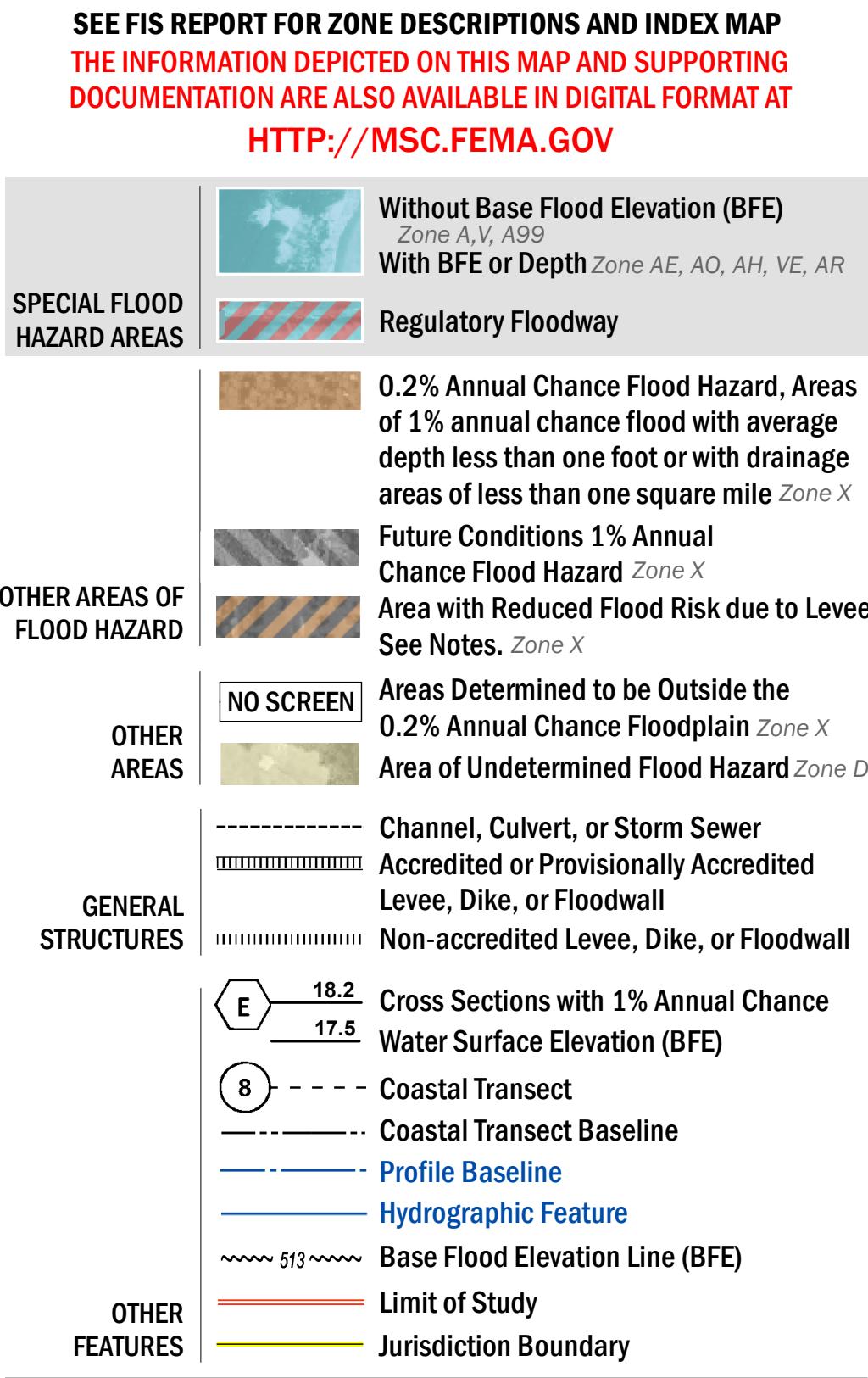


FLOOD HAZARD INFORMATION



NOTES TO USERS

For information and questions about this map, available products associated with this FIRM including historic versions of this FIRM, how to order products or the National Flood Insurance Program in general, please call the FEMA Map Information eXchange at 1-877-FEMA-MAP (1-877-336-2627) or visit the FEMA Map Service Center website at <http://msc.fema.gov>. Available products may include previously issued Letters of Map Change, a Flood Insurance Study Report, and/or digital versions of this map. Many of these products can be ordered or obtained directly from the website. Users may determine the current map date for each FIRM panel by visiting the FEMA Map Service Center website or by calling the FEMA Map Information eXchange.

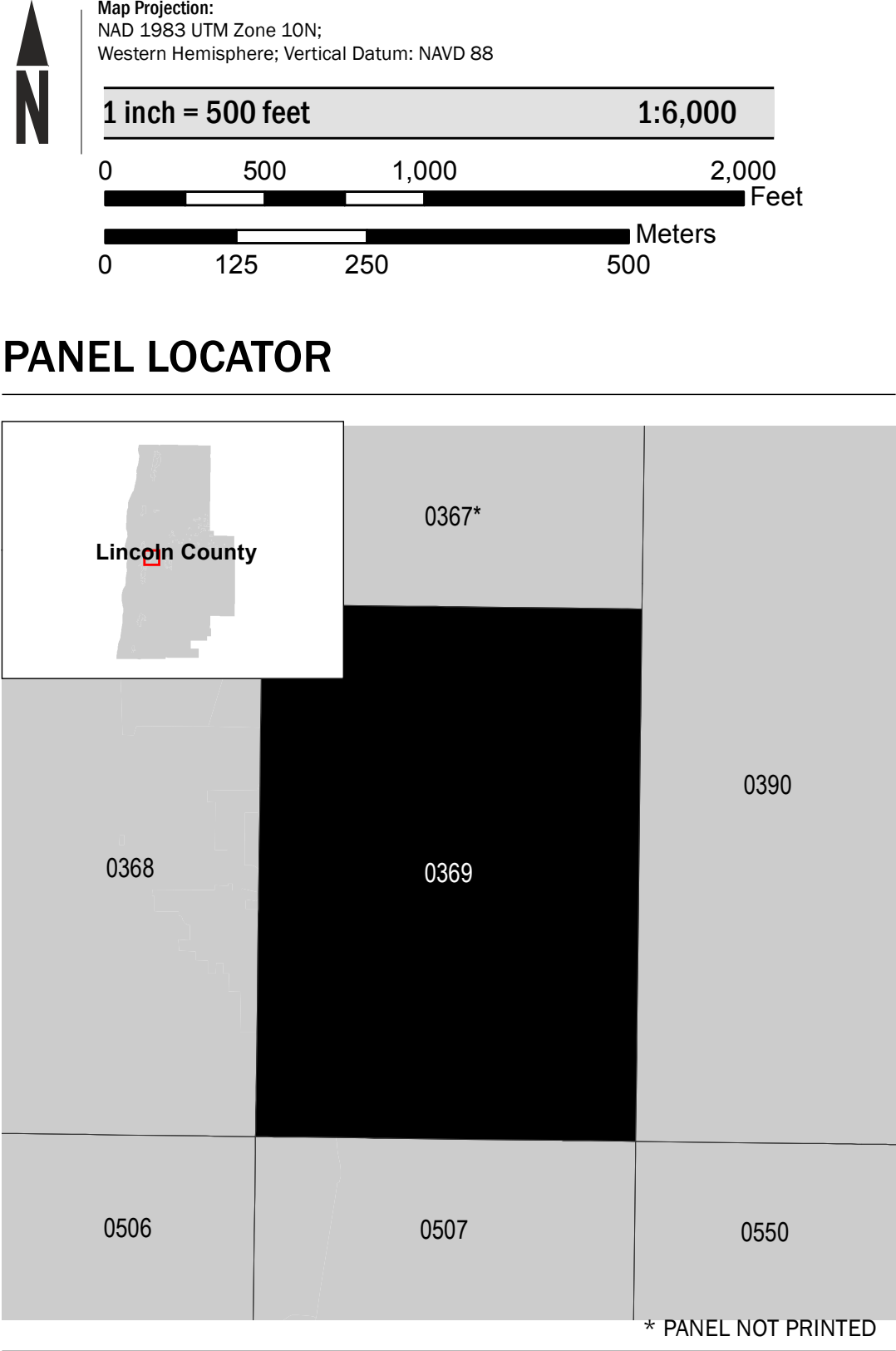
Communities annexing land on adjacent FIRM panels must obtain a current copy of the adjacent panel as well as the current FIRM index. These may be ordered directly from the Map Service Center at the number listed above.

For community and countywide map dates refer to the Flood Insurance Study report for this jurisdiction.

To determine if flood insurance is available in the community, contact your insurance agent or call the National Flood Insurance Program at 1-800-638-6620.

Base map information shown on this work map was developed and/or compiled in digital format by the Oregon Department of Geology and Mineral Industries (DOGAMI). Data sources include DOGAMI, Oregon Lidar Consortium, Bureau of Land Management, U.S. Geological Survey, Oregon Department of Fish and Wildlife, Oregon Department of Transportation, Oregon Water Resources Department, Oregon Department of Administrative Services Geospatial Enterprise Office, and Lincoln County. Base map information was rectified to 3-foot resolution lidar topographic data acquired in 2005, 2009, 2010, 2011, and 2012.

SCALE



FEMA
National Flood Insurance Program

**NATIONAL FLOOD INSURANCE PROGRAM
FLOOD INSURANCE RATE MAP**

**LINCOLN COUNTY, OREGON
AND INCORPORATED AREAS**

PANEL 369 of 900

Panel Contains:

COMMUNITY	NUMBER	PANEL	SUFFIX
LINCOLN COUNTY	410129	0369	E
NEWPORT, CITY OF	410131	0369	E

**PRELIMINARY
8/5/2016**

**VERSION NUMBER
2.3.2.1**

**MAP NUMBER
41041C0369E**

MAP REVISED