

CITY OF NEWPORT
169 SW COAST HWY
NEWPORT, OREGON 97365

COAST GUARD CITY, USA



phone: 541.574.0629
fax: 541.574.0644
<http://newportoregon.gov>

mombetsu, japan, sister city

PUBLIC NOTICE

PROPOSED CHANGES TO TIMED PARKING SIGNS AND LOADING AREAS IN THE CITY CENTER AREA

The Citizen Advisory Committee for the City Center Parking District is proposing to eliminate timed parking limitations and loading areas on certain city streets in close proximity to the intersection of Highway 101 and SW Hurbert Street. Specific changes are illustrated on the attached maps. Color copies of the maps can be viewed on the City's website at: <http://newportoregon.gov/dept/pln/default.asp>

The maps also identify the locations of loading zones that would be removed. Timed parking along Highway 101 would be set at a uniform 2-HR limit.

These changes are in response to feedback that the Advisory Committee has received from area businesses and has been coordinated with the City's Public Works Department. The general theme is to focus parking limitations on Highway 101, where there is the greatest demand and a need for more frequent vehicle turnover. With the removal of dedicated loading areas, additional parking will be made available, further justifying the removal of timed limitations on the identified side streets.

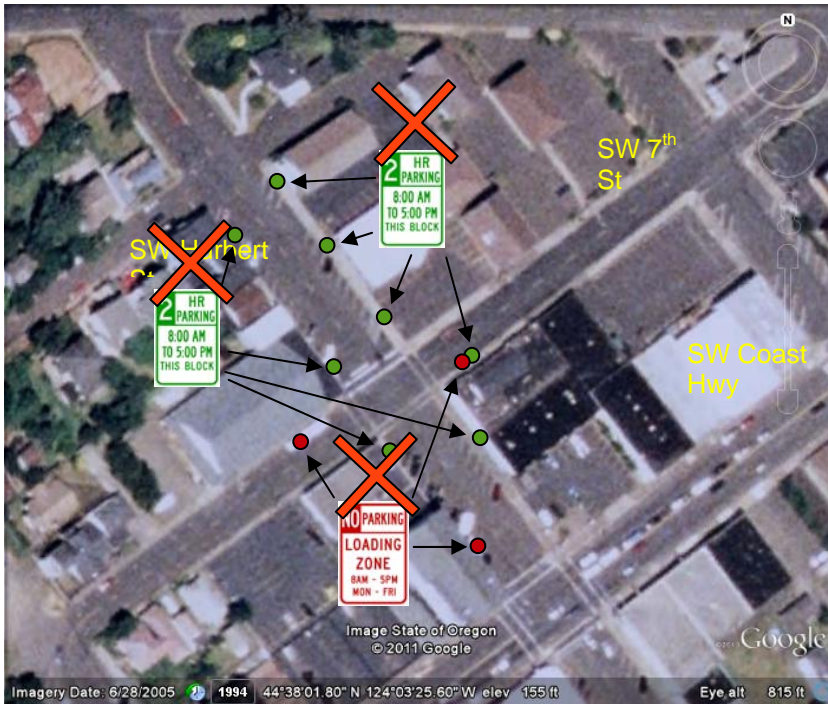
The Advisory Committee is interested in your feedback on the proposed changes. Comments should be directed to Derrick Tokos, Community Development Director with the City of Newport. They can be mailed to the address listed on this notice or emailed to: d.tokos@newportoregon.gov.

Comments will be accepted until **January 6, 2012**, after which the Advisory Committee will meet to finalize the plan. If you would like to attend the Advisory Committee meeting, please indicate as much in your comments and City staff will provide you with a notice once a date and time for that meeting is established.

Note: At the time this recommendation was developed, the Citizen Advisory Committee for the City Center Parking District consisted of Frank Geltner, Bill Bain, and Jim Weir. Jim recently resigned and that committee vacancy has been filled by Tom McNamara.



City Center Parking District Proposal



SW Hurbert St
600 & 700 blocks
(from SW 6th to Hwy 101)

- ▲ Remove existing 2 Hour Parking
- ▲ Remove existing Loading Zone

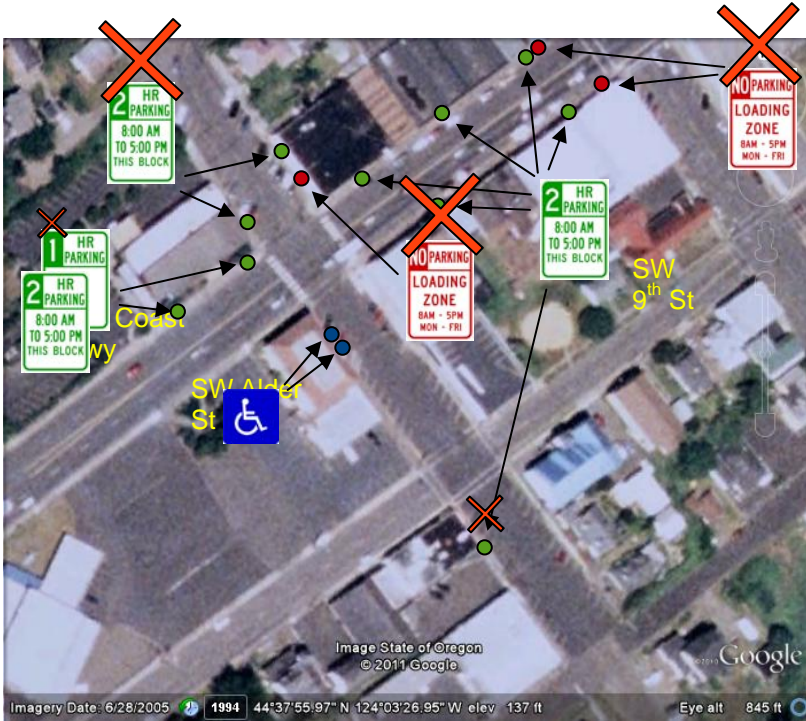
SW 7th St
300 & 400 blocks
(from SW Lee to Alder)

- ▲ Remove existing 2 Hour Parking
- ▲ Remove existing Loading Zones



SW Hurbert St
800 & 900 blocks
(from Hwy 101 to SW 10th)

- ▲ Remove existing 2 Hour Parking on Hurbert
- ▲ Remove existing 2 Hour Parking on SW 9th

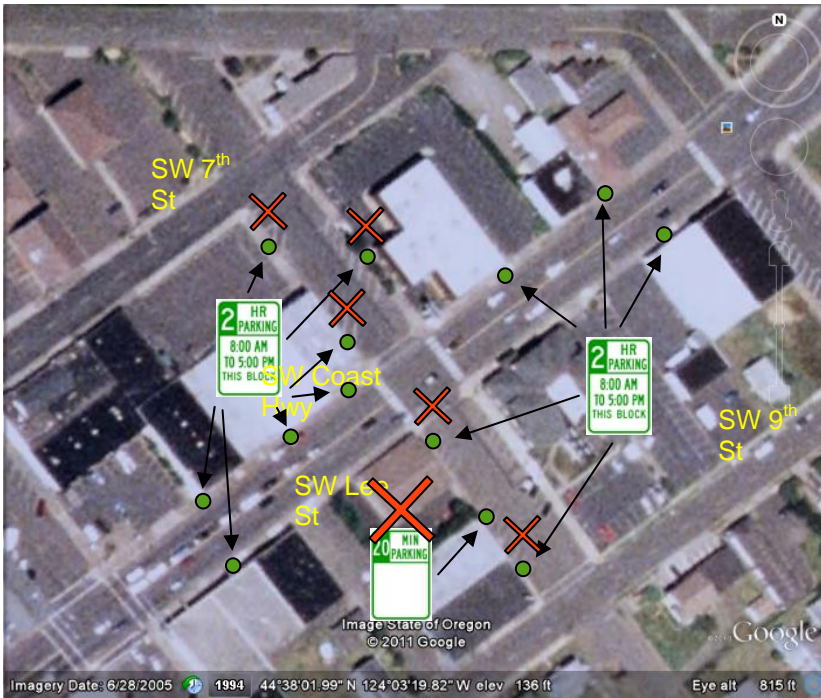


**SW Alder St
700 to 900 blocks
(from SW 7th to 10th)**

- ▲ Remove existing 2 Hour Parking
- ▲ Remove existing Loading Zone

**SW Coast Hwy
400 & 500 blocks
(from Hurbert to Neff Way)**

- ▲ Maintain existing 2 Hour Parking
- ▲ Convert existing 1 Hour Parking to 2 Hour
- ▲ Remove existing Loading Zones



**SW Lee St
700 & 800 blocks
(from SW 7th to 9th)**

- ▲ Remove existing 2 Hour Parking
- ▲ Remove existing 20 Minute Parking

**SW Coast Hwy
200 & 300 blocks
(from SW Angle to Hurbert)**

- ▲ Maintain existing 2 Hour Parking