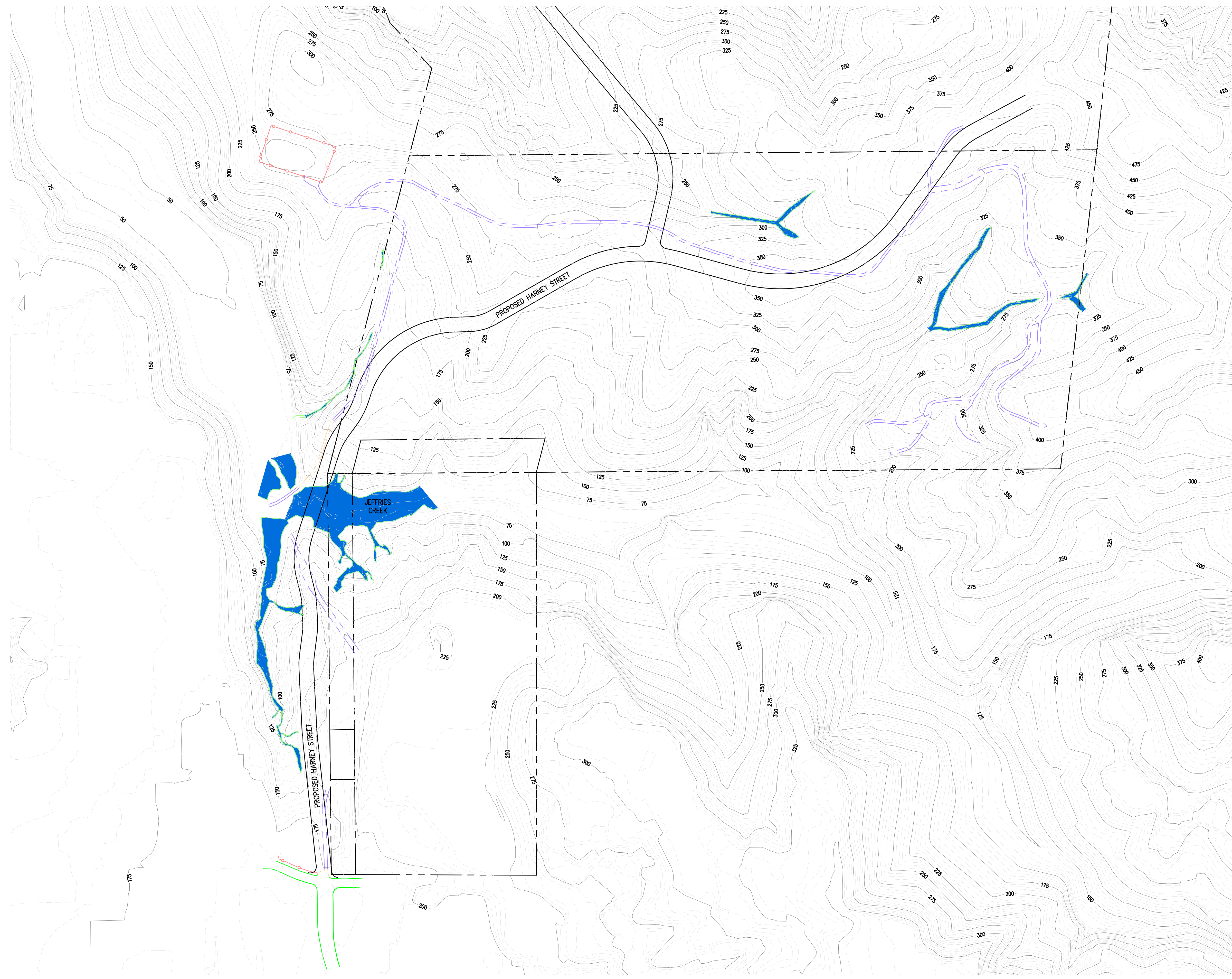


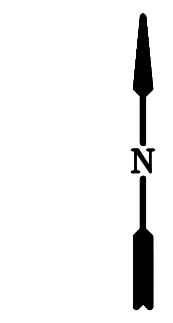
Z:\Civil 3D Projects\1041 - Bridgeview\DWG\Exhibit DWG\1041-Wetlands.dwg

8/21/2008 6:44:06 PM



DELINEATED WETLANDS

NOTE:
APPARENT WETLANDS TO THE WEST OF SUBJECT
AREA HAVE NOT BEEN DELINEATED



SCALE 1" = 200'

WILLIAM I. PETERSON
ENGINEERING CONSULTANTS INC.
 4300 CHERRY AVE. NE. KEIZER, OR. 97303
 (503) 390-7402 FAX # 390-7461

NOT FOR
 CONSTRUCTION
 UNLESS STAMPED
 APPROVED



NO CHANGES OR MODIFICATIONS
 OR REPRODUCTIONS ARE TO BE
 MADE TO THESE DRAWINGS
 WITHOUT A WRITTEN
 AUTHORIZATION FROM THE
 ENGINEER WHOSE STAMP
 APPEARS ON THESE DRAWINGS
 DATE OF RECORD -

Design: G.H.B.
 Drawn: G.H.B.
 Checked: W.L.P.
 Date: 08/08
 Scale: AS SHOWN
 As-Built: G.H.B.

**BRIDGEVIEW
 HEIGHTS**

**DELINEATED
 WETLANDS**

Job Number
1041
 Sheet Number
1 of 1