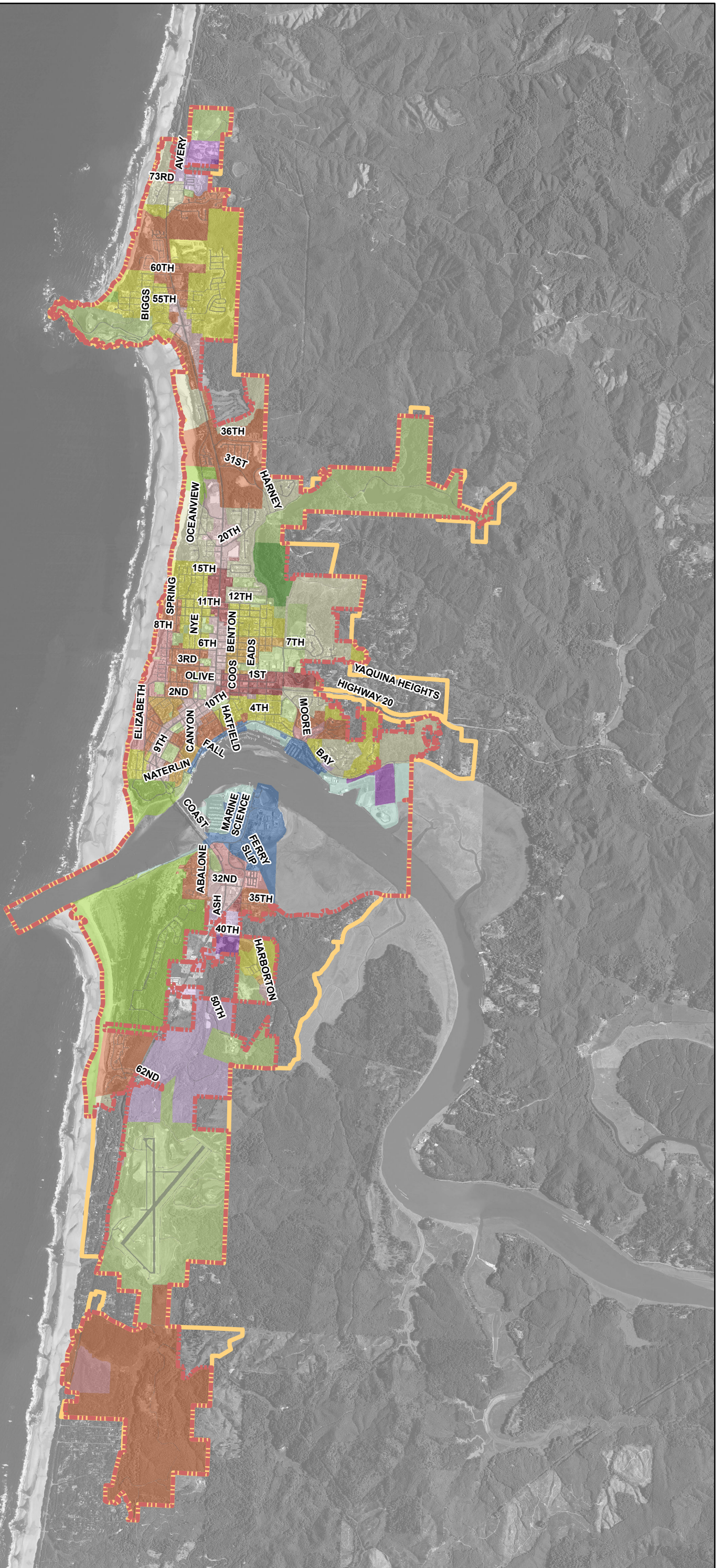


### Legend

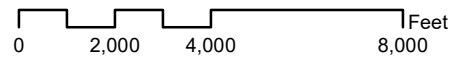
-  City Limits
-  UGB
- Zone District**
-  C-1 Retail and Service
-  C-2 Tourist
-  C-3 Heavy
-  I-1 Light
-  I-2 Medium
-  I-3 Heavy
-  P-1 Public Structures
-  P-2 Public Parks
-  P-3 Public Open Space
-  R-1 Low Density Single-Family
-  R-2 Medium Density Single-Family
-  R-3 Medium Density Multi-Family
-  R-4 High Density Multi-Family
-  W-1 Water Dependent
-  W-2 Water Related



City of Newport  
 Community Development Department  
 169 SW Coast Highway  
 Newport, OR 97365  
 Phone: 1.541.574.0629  
 Fax: 1.541.574.0644

## Newport Zoning Map

Image Taken July 2009  
 4-inch, 4-band Digital Orthophotos



N



This map is for informational use only and has not been prepared for, nor is it suitable for legal, engineering, or surveying purposes. It includes data from multiple sources. The City of Newport assumes no responsibility for its compilation or use and users of this information are cautioned to verify all information with the City of Newport Community Development Department.